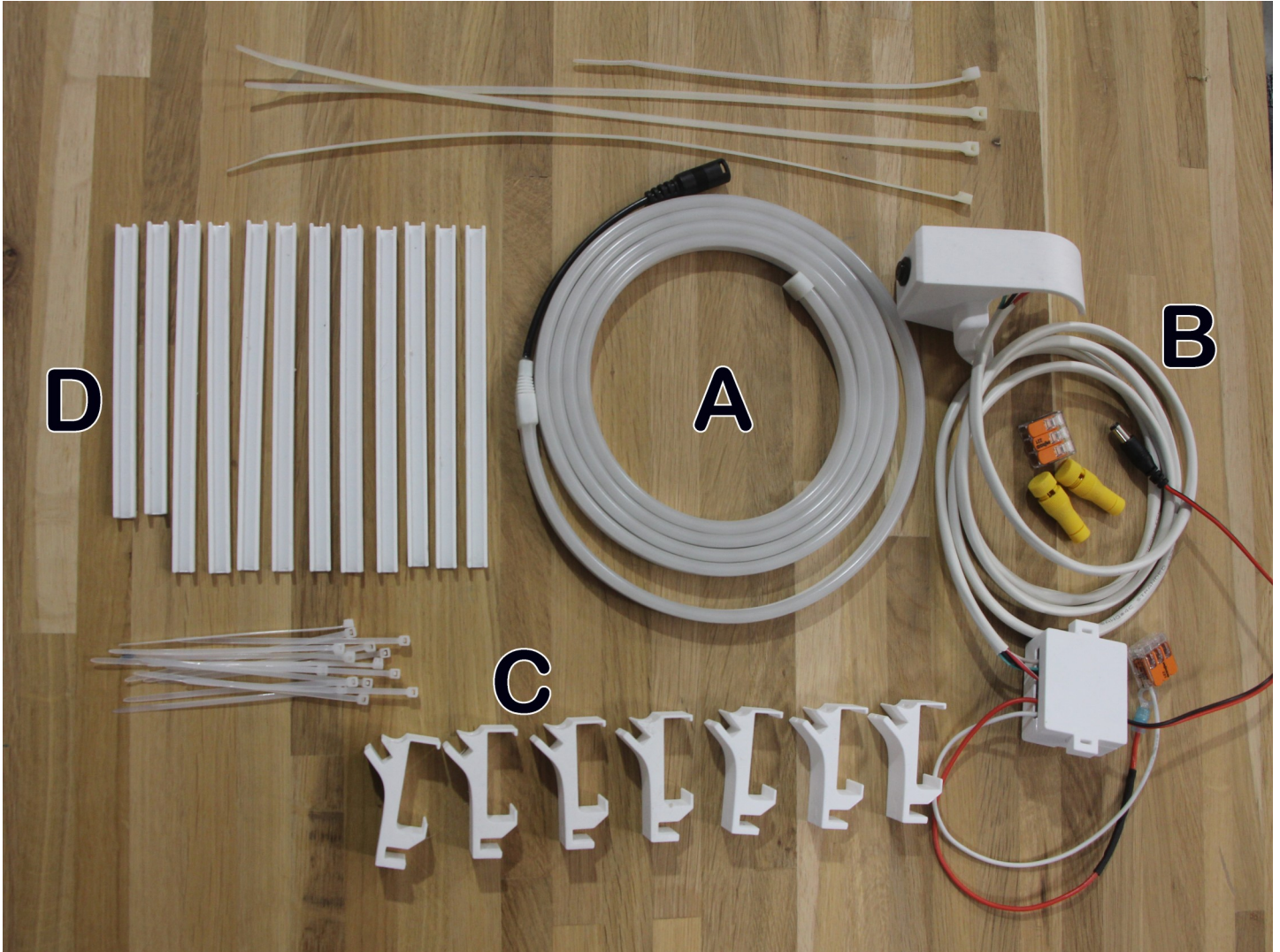


Installation instructions

Katy's Casita Closet Light

Your light kit will contain the following parts:



A: Flexible light strip

B: Power Module with Switch Pod.

C: 7x Light Clips for central support

D: Flexible light strip backing spacers. 10 x large, 2 x small

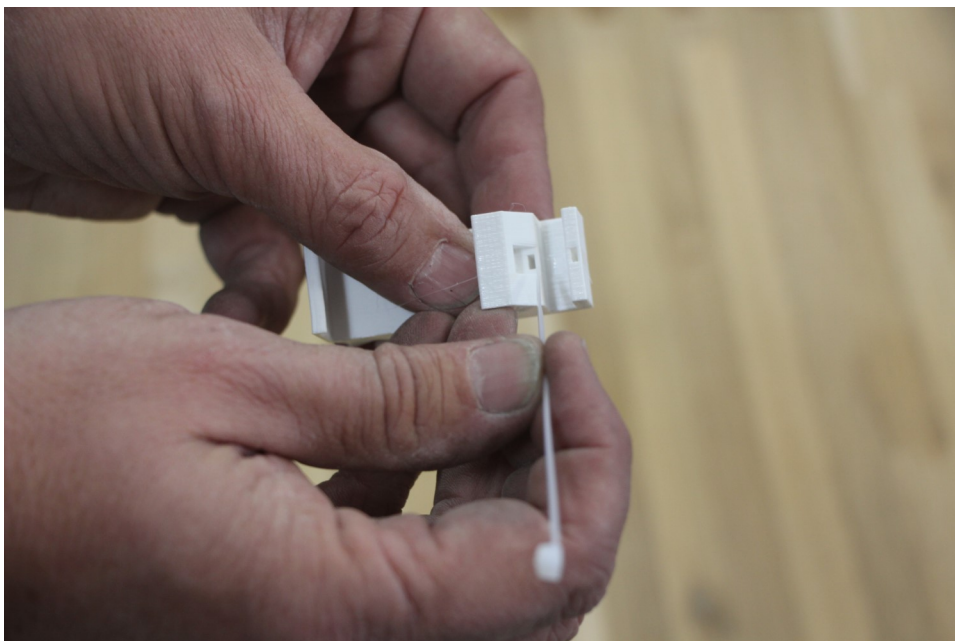
ALSO INCLUDED:

- 2 x Wago 221-613 wire splices
- 2 x Positap connectors
- Small zip-ties for Light Clips
- 2 x Long zip-ties for Switch Pod
- 1 Long zip-tie for Power Module
- Misc zip-ties for wire management

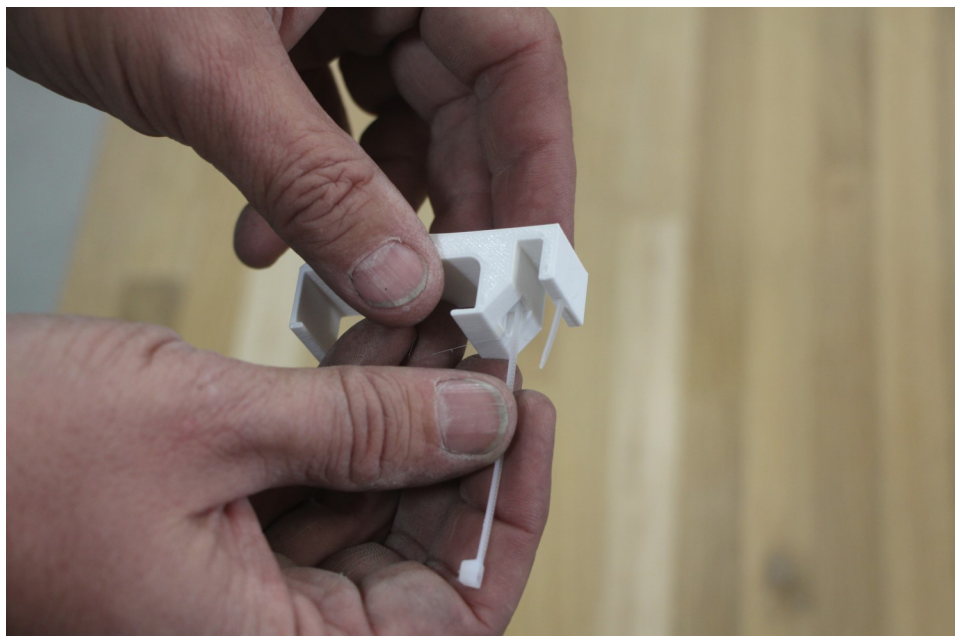
Whether you are adding your light to existing closet shelves or during a new shelf install, start by preparing the 7 light clips.

Insert a small zip-tie into the internal channel on either end of the light clip.

Note the orientation of the zip-tie head.



Pull the zip-tie through. DO NOT insert the zip-tie end into it's head. Leave the tie open.



Do the same for the other side.



Repeat this for all 7 Light Clips.

Now, prepare the central support.

If you are doing a new closet install, prepare the central support before starting the closet install.

If you are installing on an existing shelf install, follow the same steps you see below. Your central support will already be in place. There will be less room to work, but the steps are the same.

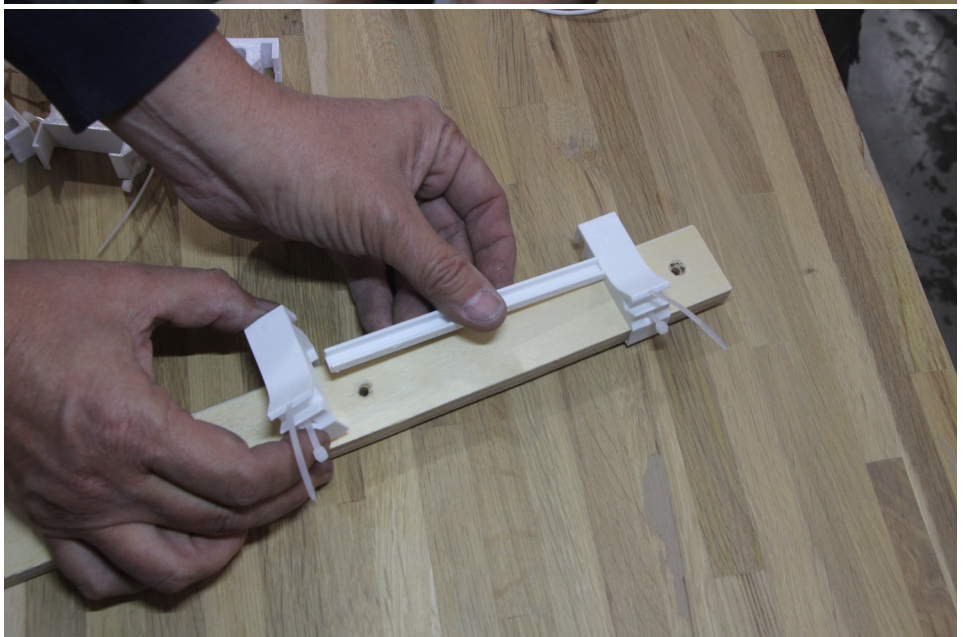


Start at the top end (with the hole). Place the clip as shown with the top of the clip about 1/4 in below the hole.

NOTE: match the curved part of the clip to the curve in the wood.

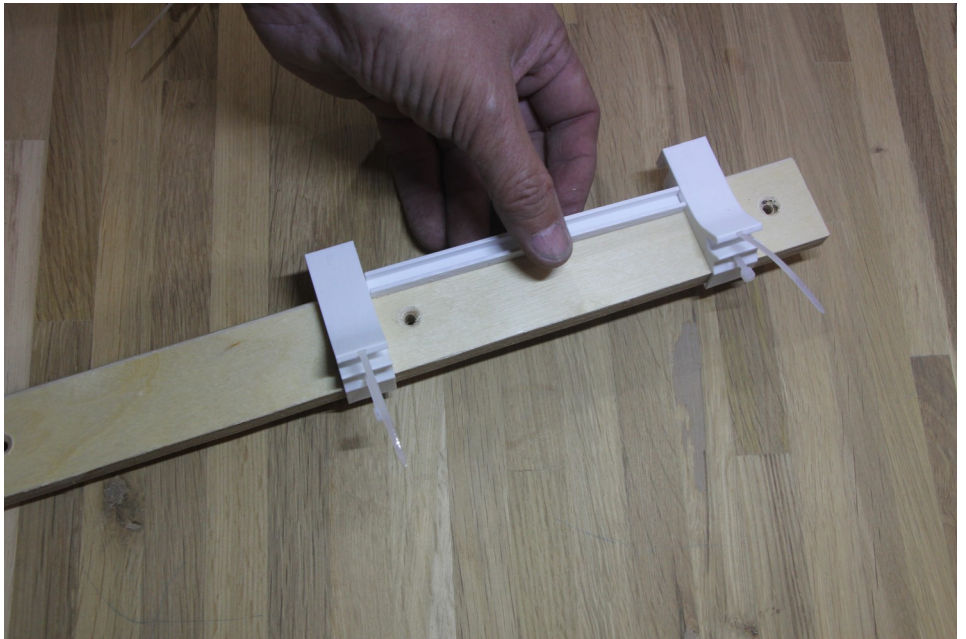


For the next clip, use one of the short backing spacers to set the distance.



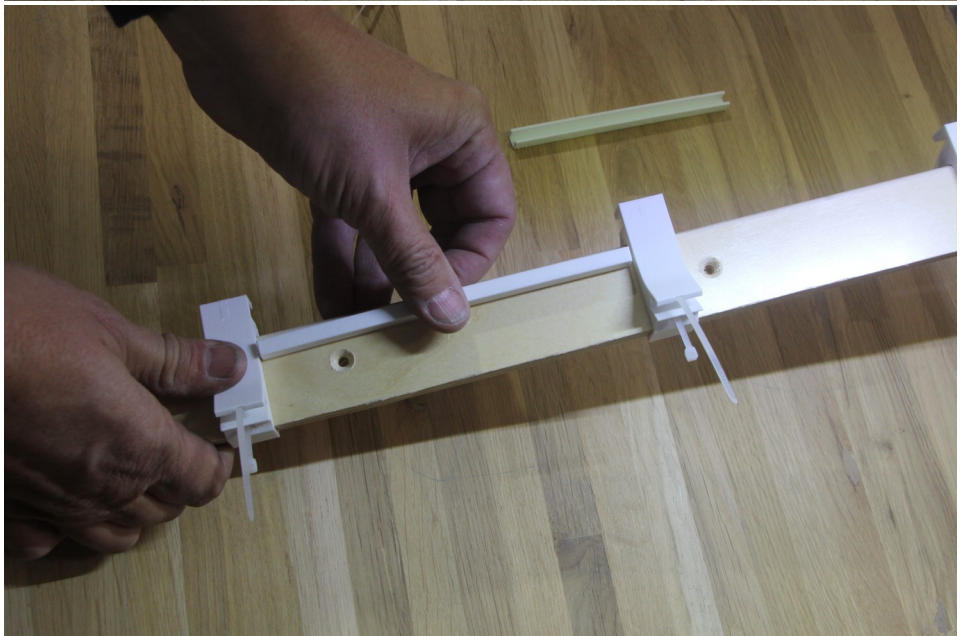
The correct spacing between the first and second clip.

NOTE: only the first 2 clips are separated by the short spacer. For ALL OTHER clips, use one of the long spacers.



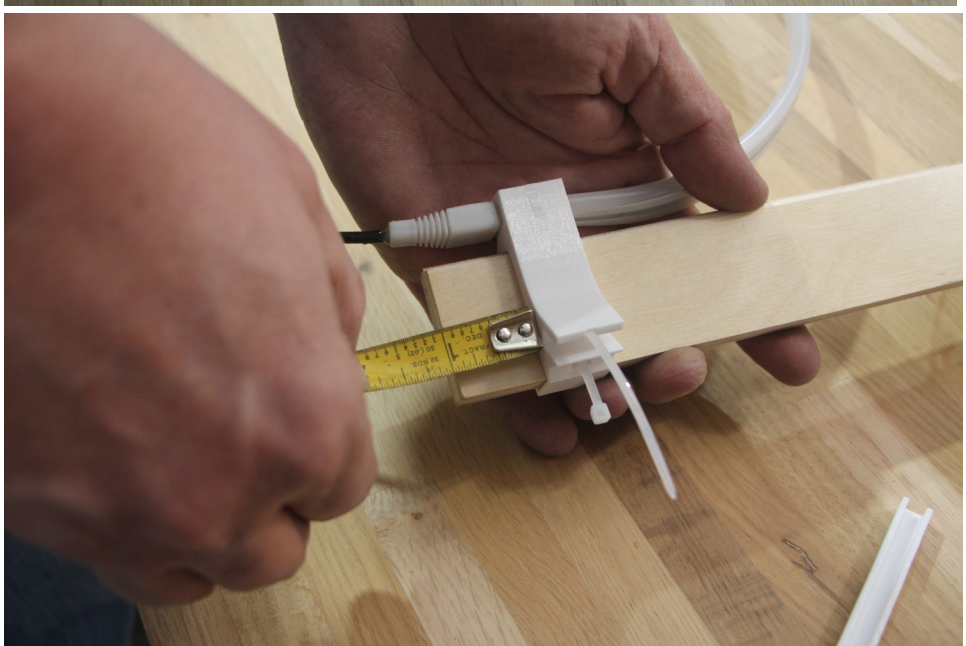
Proceed all the way down the support adding clips.

Remember to use the long backing spacers.



You should have about 1 inch left at the bottom of the wood support.

If not, adjust as needed. It's ok to cut a pair of spacers with a sharp blade in later steps if you need space.

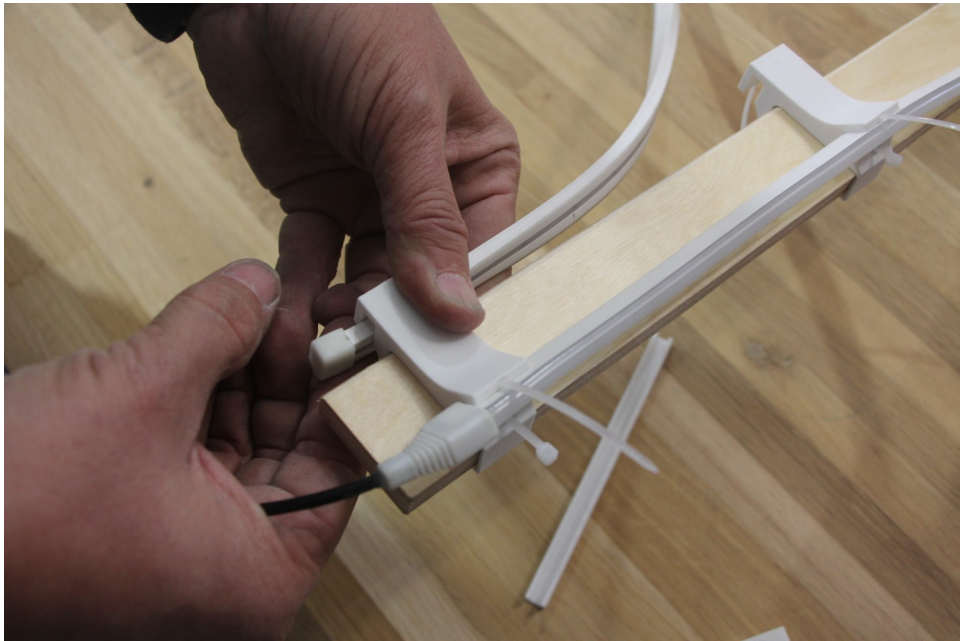


Time to attach the light strip.

Start by slipping the two ends into the bottom-most clip. Make sure the clear, rounded part of the strip faces as seen in the picture.

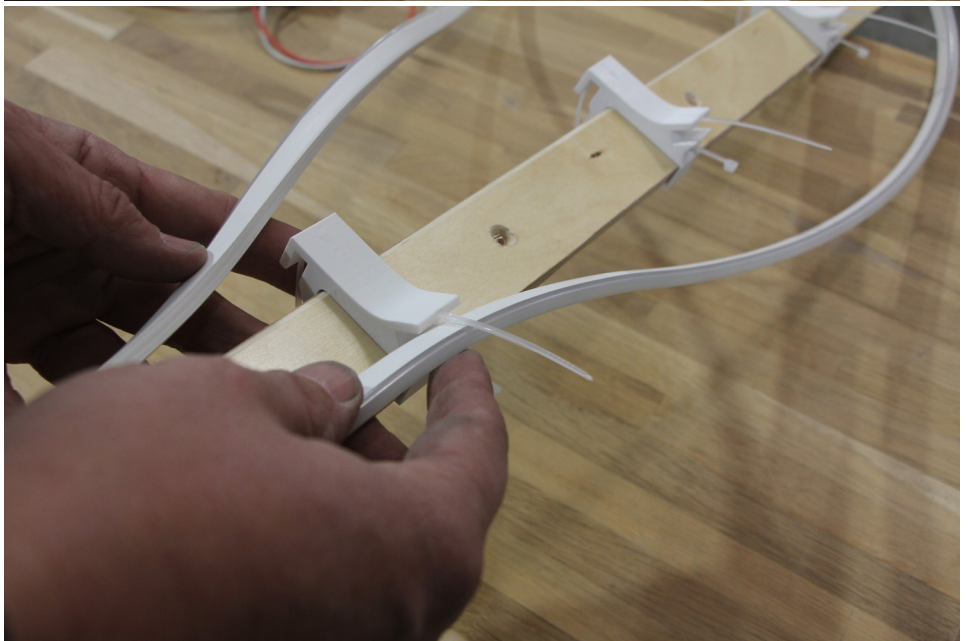
Notice the light strip has a side with a clear stripe. We suggest you face this toward the wood surface.

The strip end with the wire may be left or right. In this image, it is on the right. Yours may be on the left.



Proceed up the support; pressing in both sides of the light strip at each clip. Try to keep the strip tight between clips.

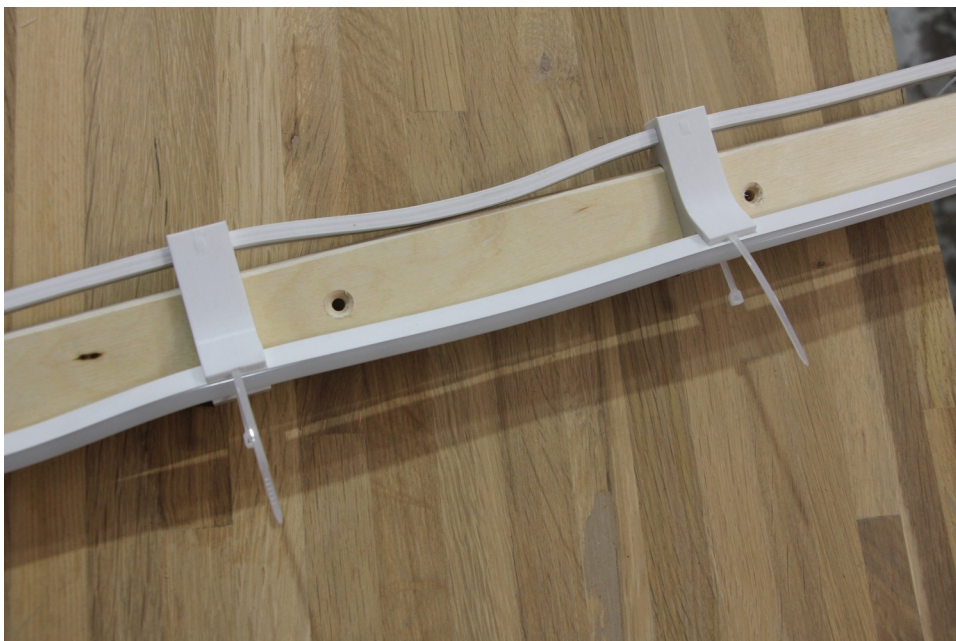
LEAVE THE ZIP-TIES UNDONE.



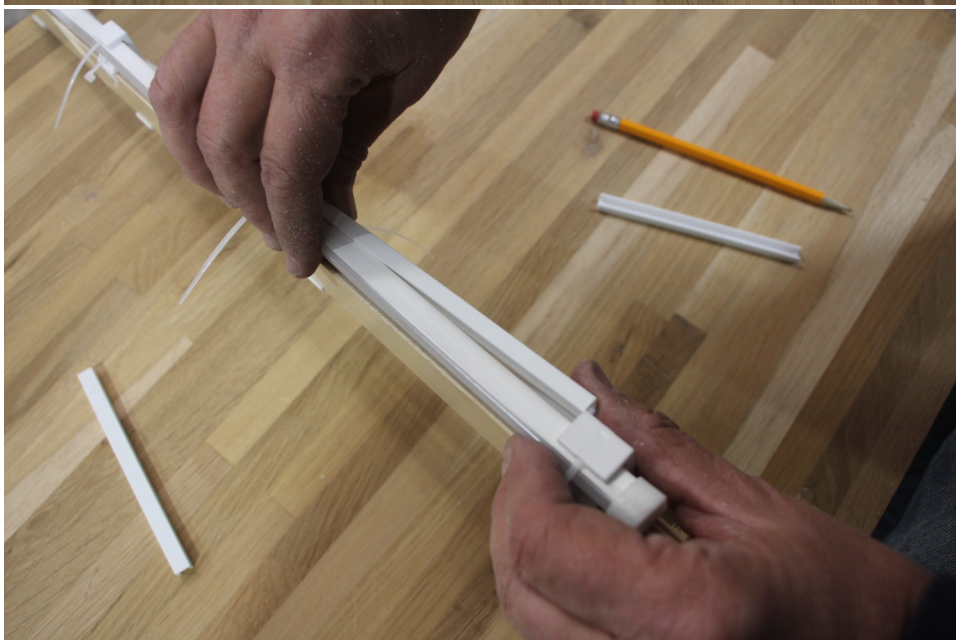
When you get to the top, make sure the curved part of the light strip faces the way you see in this picture.



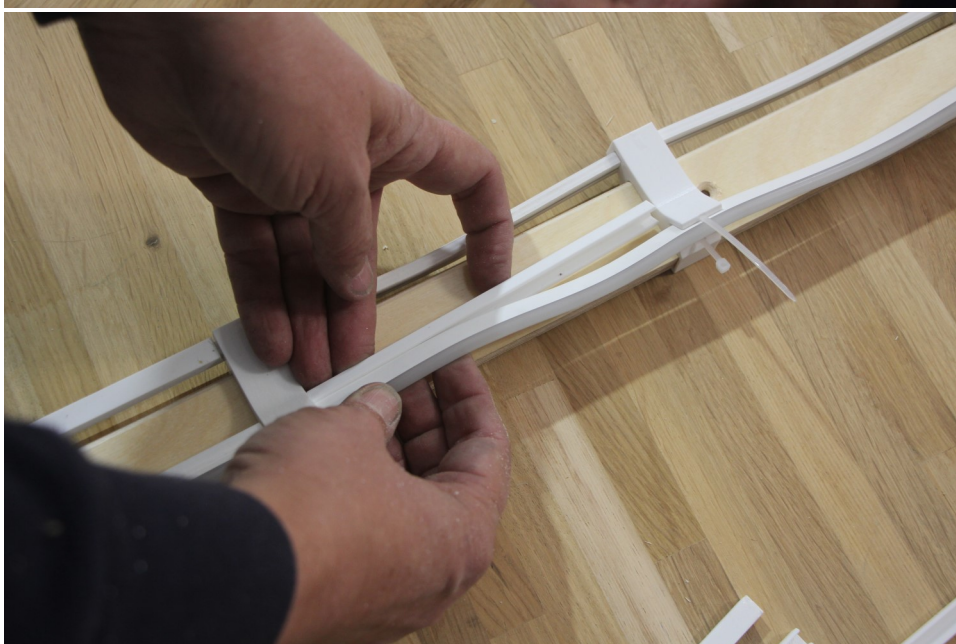
It is OK if your strips “sag” a little. You are about to cure that.



Starting from the bottom. Insert a backing spacer onto the “square” side of the strip. You can adjust your light strip as needed.



Do both sides before proceeding “up” the support to the next clip.



If you are happy with your spacers and everything looks nice and straight, it's time to tighten the zip-ties.

These are the tools we like to use.



Thread the zip-tie through its head and grab the zip-tie end with small pliers. Roll the pliers to tighten the tie.

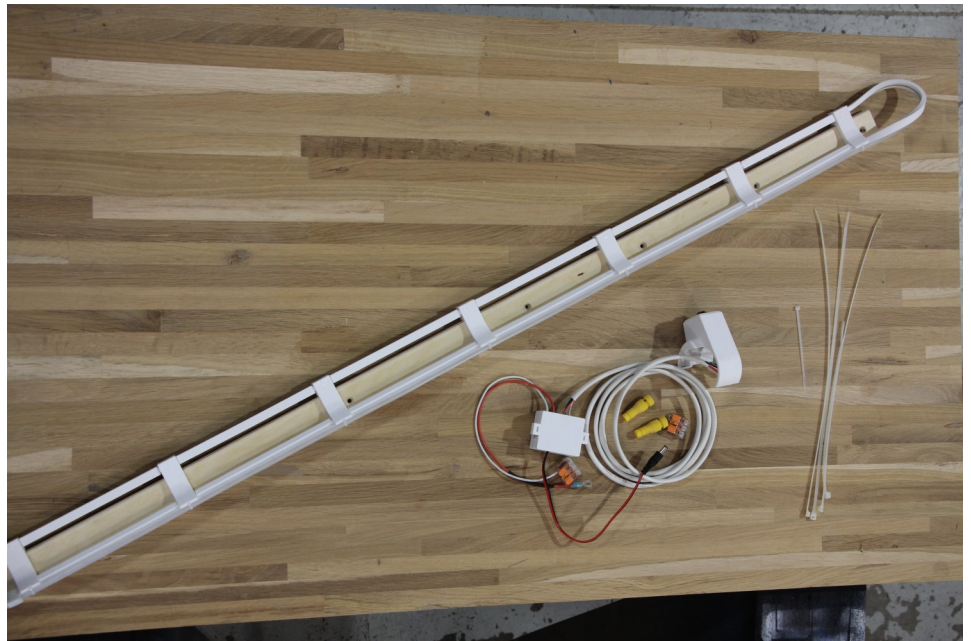
If you are adding a light to existing shelves, the zips ties will be difficult. It's ok if they aren't tight. Do your best with your fingers.



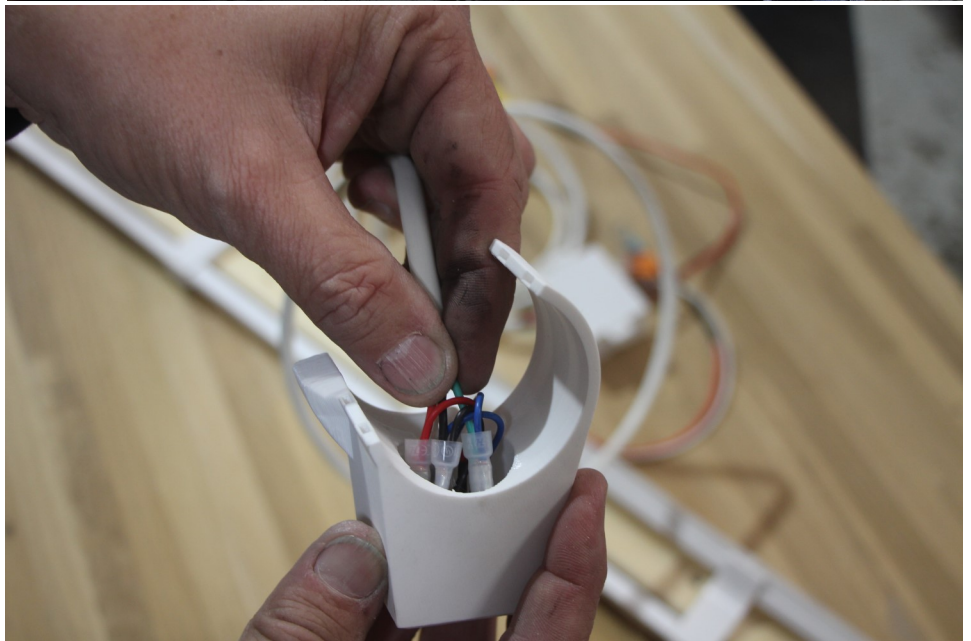
Clip off the end of the zip-tie. Using your fingers, roll the head of the zip-tie into the recess.



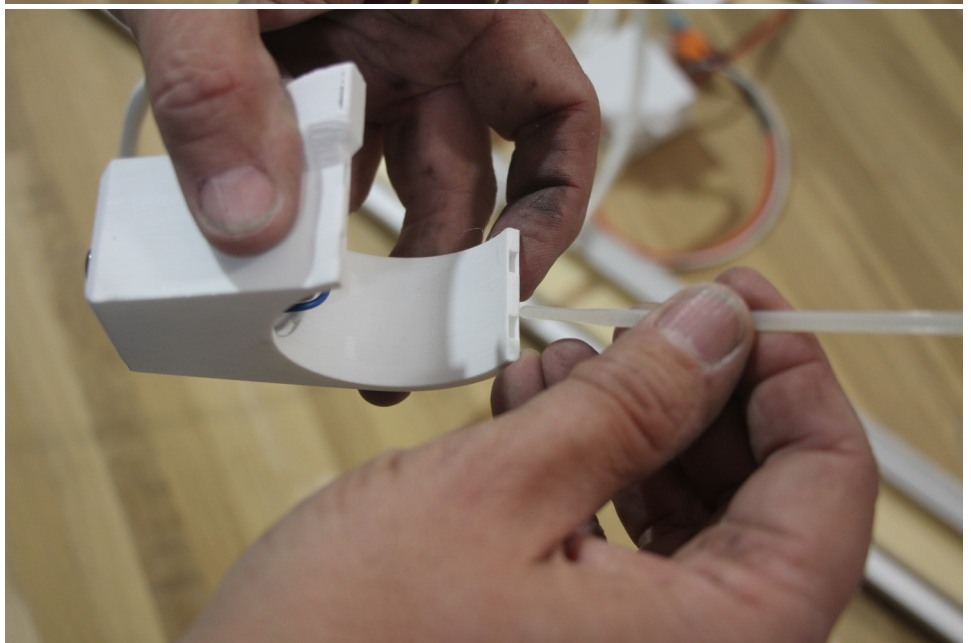
Your support is ready. Now its time to prepare your switch pod.



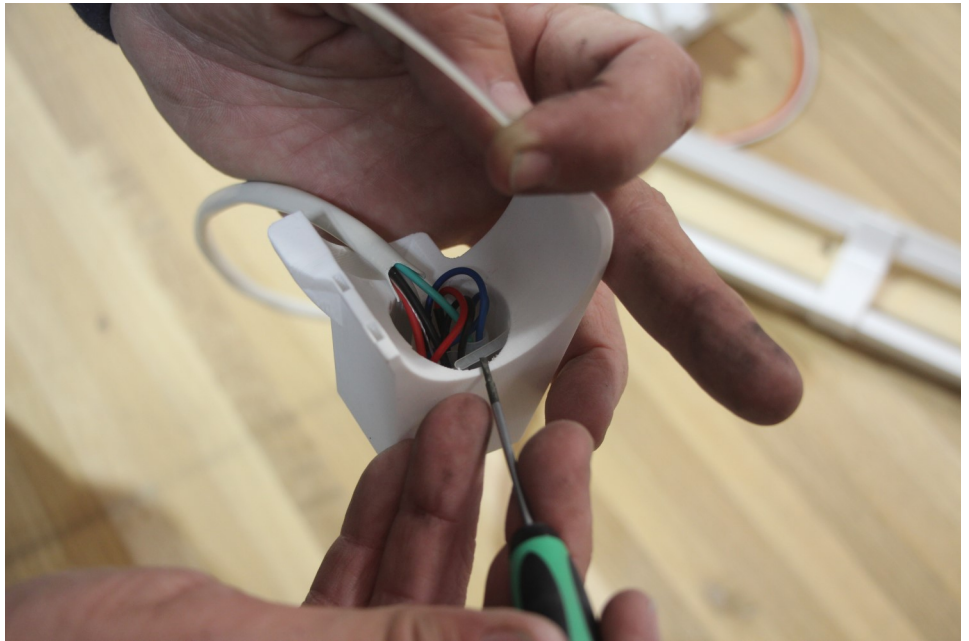
Stuff the ends of the wires into the switch pod as shown.



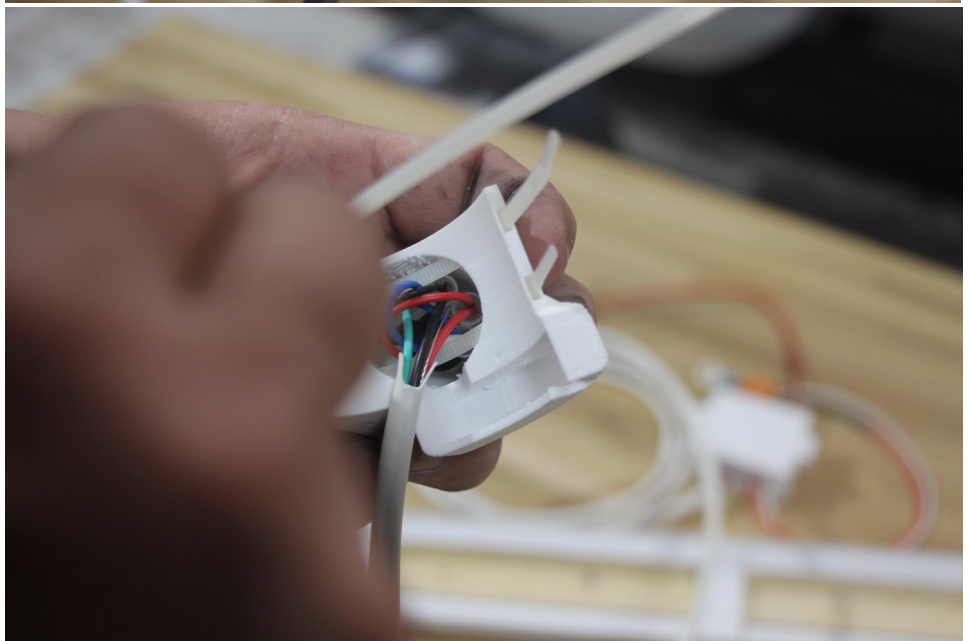
Using a LONG zip-tie, thread it into the switch pod as shown.



You may need a small screwdriver or toothpick to guide the zip-tie end into the hole on the other side of the gap.



Do the same for the other zip-tie. Its ok for the zip-tie to be over OR under the wire bundle.

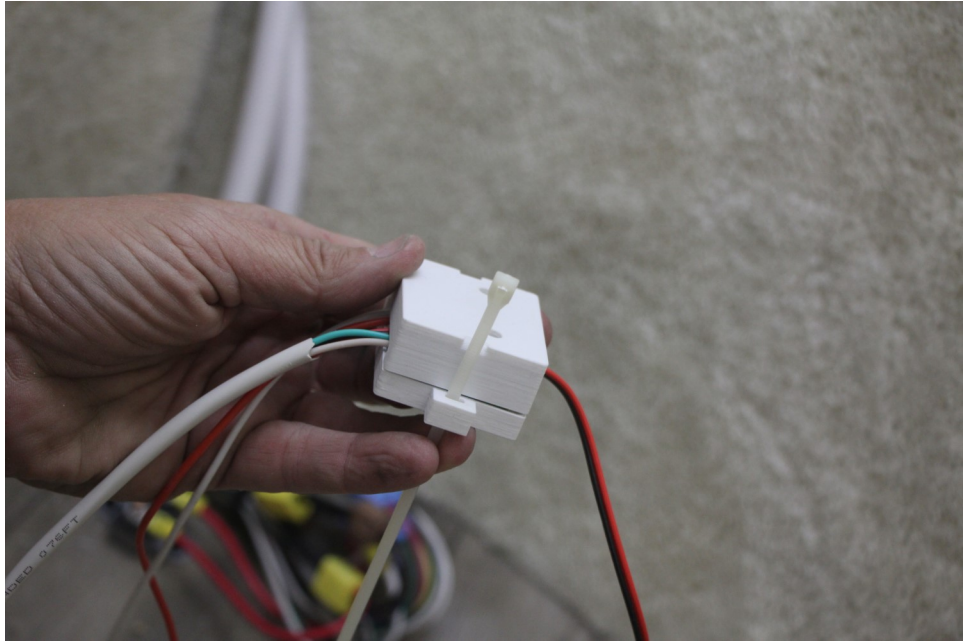


Insert a long zip-tie into the power module as shown.

PREPERATION IS DONE.

Its time to install.

If you are installing your light at the same time as a new closet install, Do the following steps AFTER you do the initial prep of removing the closet door and wire protector and BEFORE you put in the closet floor.



Start by identifying the ground wire. This will be the thickest WHITE wire.

You are going to cut this wire. The best place is at the peak of the "curve" as shown here.

Look ahead at the next steps before cutting. You want to make sure to have enough room to strip the wire.



Cut the wire. Make sure to leave yourself at least 1.5 to 2 inches of wire on either side of the cut.

The picture shows just about the MINIMUM distance you need.



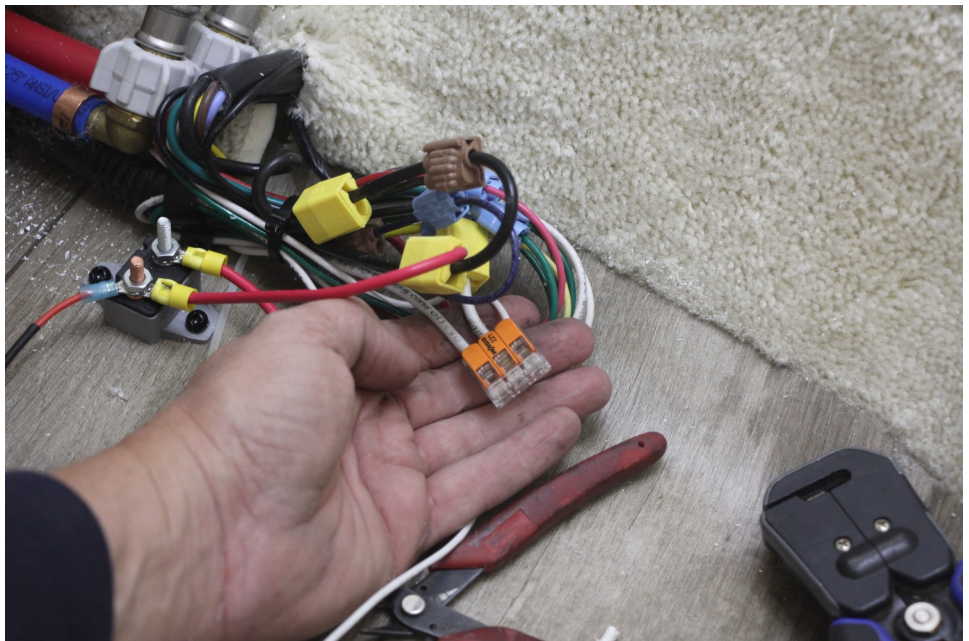
Strip the ends of the white wires back about 3/8 to 1/2 inch.

Find the white wire of the power module. It should already be connected to a Wago splice.



Insert the white wire ends into the Wago connector and clamp them with the orange levers.

TUG ON THESE WIRES TO MAKE SURE YOU HAVE SEATED THEM FIRMLY IN THE WAGO.

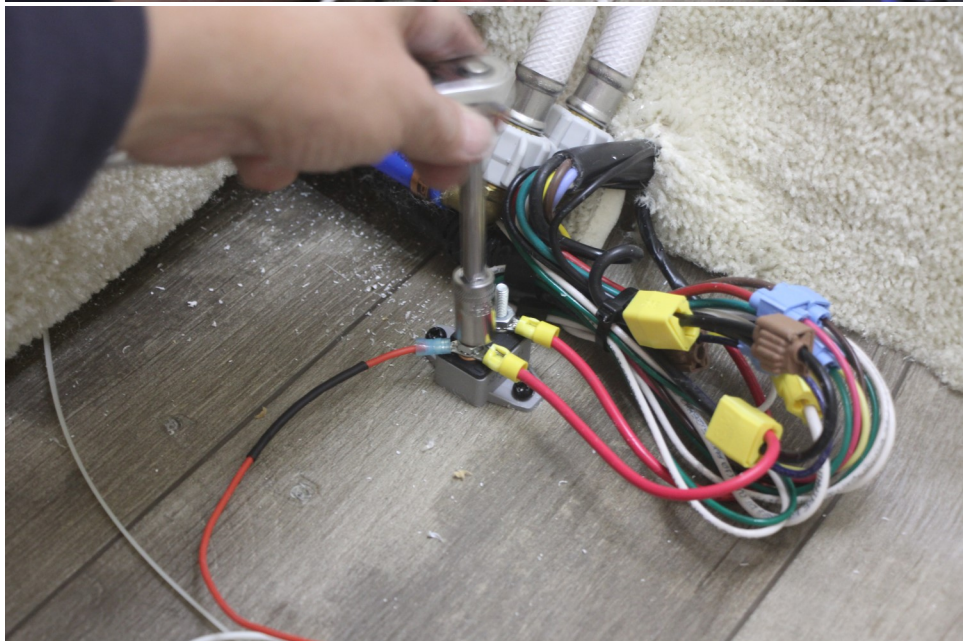


If you have a fuse link like in the picture, simply connect the ring terminal of the power module to one post of the fuse link.

IF YOU DON'T HAVE A FUSE LINK:

Cut off the ring terminal, strip the end and insert it into the OTHER Wago supplied with your kit.

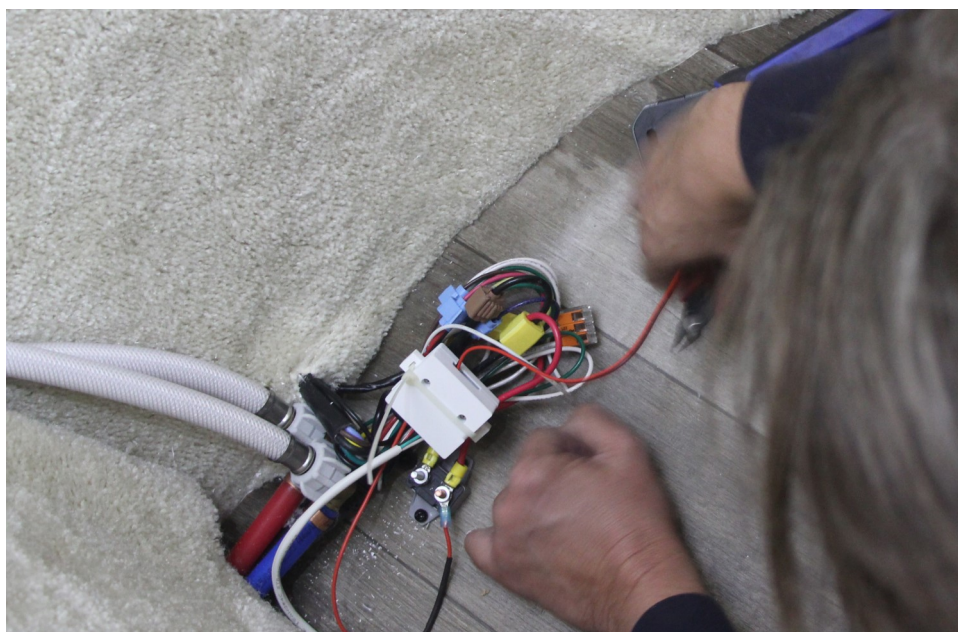
Now, Identify the thickest BLACK wire, and follow the same thing you did with the white wire for the BLACK wire and the red end of the power module.



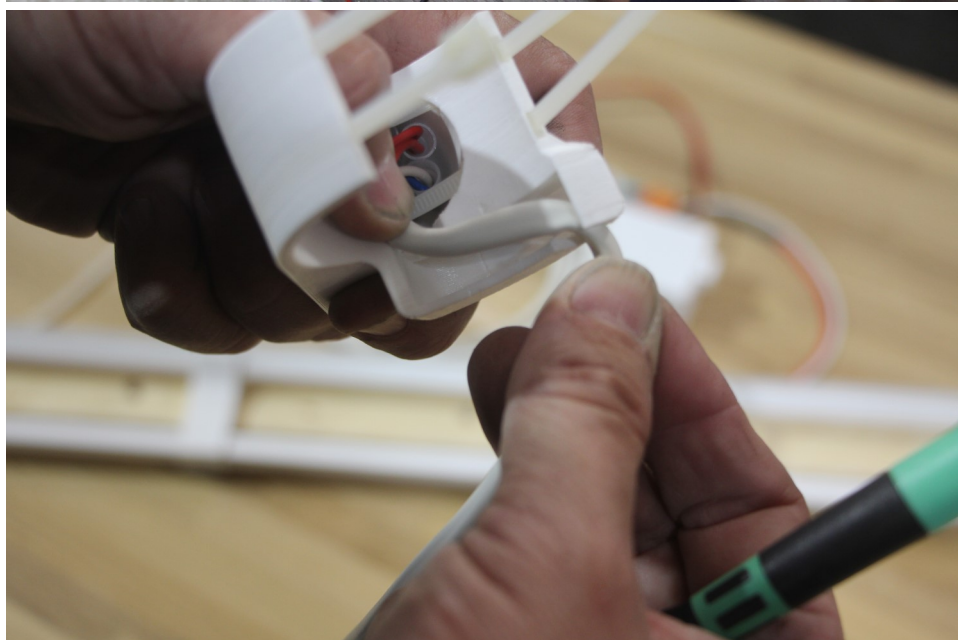
There should now be power to your module. Test by pressing the power button. The power symbol will light up when on.



Using the long zip-tie you inserted into the power module, loop it around the wire bundle and through the other leg of the module. Pull this zip-tie medium tight to secure the power module from moving around.



In the following step, you clip the switch pod to the vent pole. Make sure to keep the white wire in the channel as shown before tightening the zip-ties.





Clip the switch pod to the PVC downpipe just inside the door.

Run the zip-ties behind the pole.



The best height is shown in the image. If you don't have this "nook", place it at a height that will miss the door latches. (don't worry, you can adjust the height later)

Tidy the white wire however you see fit.

We find it very helpful to zip-tie the switch cable at the bottom of the down-pipe as shown.

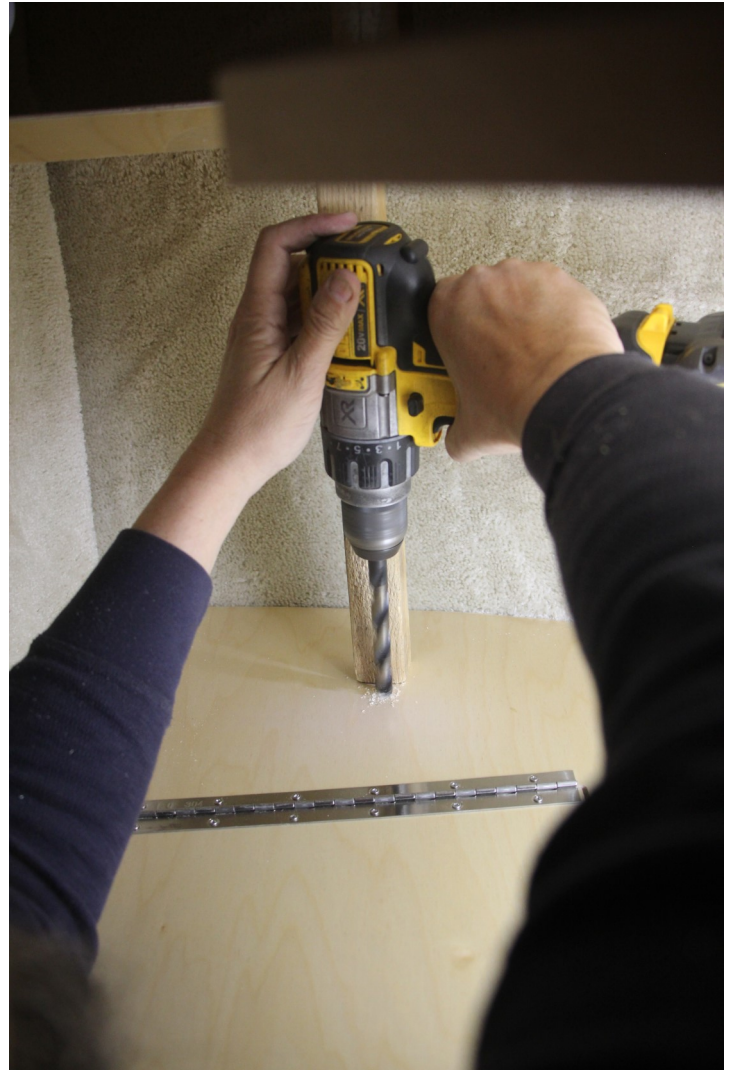


OK. If you are doing a new closet install.....that's it for now. CONTINUE INSTALLING YOUR KATY'S CASITA CLOSET.

Resume these instructions JUST BEFORE YOU WOULD ATTACH THE LONG CENTRAL SUPPORT.



Use some sort of straight edge to determine where the long central support (with your light) will touch the closet floor. Go back about 1.25 inches and mark that point.



Drill a 1/2" hole.



Place your central support near the corner. Put the 5.5mm light strip plug through the hole and plug it into the power module below.

Everything should work. You should be able to turn the light on and off.

Screw in your central support as per the directions for your Katy's Casita Closet.

You are done with these instructions. Continue with your Katy's Casita Closet Install and enjoy both your light and your wonderful new closet shelves.